

EXTREMELY POOR HYGIENE



Large dumpster bins sit right outside poorly placed demountables

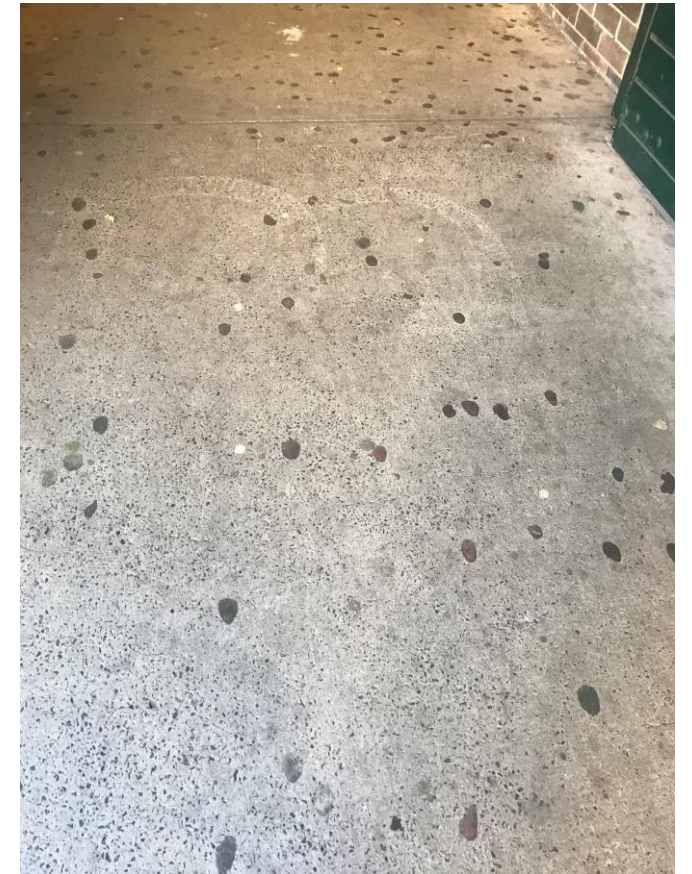
EXTREMELY POOR HYGIENE cont...



Bird poo and feathers in the roof of the COLA, children sit under this COLA to eat their lunch



Bird poo on seats near the canteen where children sit and eat their lunch



When the school is in such disrepair and so unclean, students feel no pride in their school, and we see chewing gum on paths all over the school

ISSUES WITH ASBESTOS PRACTICES



It was only after an Inner West Courier article about asbestos at Concord High School that the Department of Education agreed to 'contain' it. Here we see the geotextile layer that is supposed to contain the asbestos in the oval completely neglected to the point it is also a trip hazard.

We have an email from SafeWork NSW that says they *"identified a concern regarding the management of Asbestos at the school... [and] taken the appropriate action and the department is rectifying it."*

BUILDINGS SIMPLY **NOT** BEING MAINTAINED ADEQUATELY



The maintenance at the school is not sufficient for the age of the school. There have been no facility upgrades since the school opened in 1981.



AGED AND INADEQUATE SEATING THAT'S FALLING APART – THIS IS A WHS ISSUE!!!



Broken logs at the side of the school oval where children are expected to sit



This furniture is estimated to be around 20 years old, splintering and unstable... also covered in bird poo

THE SCHOOL IS ALSO SHORT BUBBLERS FOR THE STUDENTS



It wasn't until the P&C did a walk around the school and highlighted maintenance issues such as these bubblers that we discovered there were not even enough bubblers – working or not – for the students

MORE DEMOUNTABLES IS THE DEPARTMENT OF EDUCATION'S SOLUTION FOR OUR GROWING SCHOOL



We are concerned about the generational damage of a 16 toilet shortfall has had on our female students. And the Department of Education's solution is to bring in more demountables. At the start of 2022 students will be welcomed back to 22 demountables like this one in the teachers' car park

BUT THERE IS SO MUCH UNUSED SPACE AT OUR SCHOOL AND THE DEPARTMENT OF EDUCATION REFUSES TO MAKE USE OF IT

